

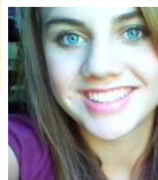
Election Date: Tuesday, November 2, 2010



NAPPA

Nevada Advocates for Planned Parenthood Affiliates

Get Involved!



The lobbying & political arm of Planned Parenthood in Nevada

Nevada Voter Guide

Name	Incumbent	Rating	Party
US Senate*			
Harry Reid	I	Leans Pro	Dem
Sharron Angle		Known Anti	Rep
Scott Ashjian		n/r	Tea
US Congress District 1*			
▶ <i>Shelley Berkley</i>	I	Pro	Dem
Kenneth Wegner		n/r	Rep
US Congress District 2*			
Nancy Price		Pro	Dem
Dean Heller	I	Known Anti	Rep
US Congress District 3*			
▶ <i>Dina Titus</i>	I	Pro	Dem
Joe Heck		Anti	Rep
Governor			
Rory Reid		Leans Pro	Dem
David Curtis		Pro	Green
Floyd Fitzgibbons		Known Anti	IA
Art Lampitt		Leans Anti	Lib
Brian Sandoval		n/r	Rep
Lieutenant Governor			
● <i>Jessica Sferrazza</i>		Pro	Dem
Brian Krolicki	I	n/r	Rep
State Attorney General			
● <i>Catherine Cortez Masto</i>	I	Pro	Dem
Travis Barrick		Known Anti	Rep
Joel Hansen		Known Anti	IA
State Treasurer			
<i>Kate Marshall</i>	I	Leans Pro	Dem
Mike Hawkins		n/r	IA
Steven Martin		n/r	Rep
State Controller			
● <i>Kim Wallin</i>	I	Pro	Dem
Warren Markowitz		Leans Pro	IA
Barry Herr		n/r	Rep

KEY

Pro = Pro-Choice. Rated 100% on candidate questionnaire.
Leans Pro = Leans Pro-Choice. Rated 70-99% candidate questionnaire. Pro-Choice on many but not all issues.
Leans Anti = Leans Anti-Choice. Rated 41-69% candidate questionnaire rating. Anti-Choice on many but not all issues.
Anti = Anti-Choice. Rated 0-40% candidate questionnaire rating.
Known anti = no questionnaire but voting record, public statements or anti-choice endorsements are considered.
n/r = No Response. Did not return the 2010 questionnaire.

Party Abbreviations: Dem/Democratic; IA/Independent American; Lib/Libertarian; NP/Non Partisan; Rep/Republican; Tea/Tea Party

* ▶ **Planned Parenthood Action Fund** Only the national advocacy organization can endorse federal candidates.

● = **NAPPA (Nevada Advocates for Planned Parenthood Affiliates) Endorsed**

◆ = **PPAMM Endorsed Candidate** (Northern Nevada municipal and local races)

Underlined: Previously endorsed but no current questionnaire

Italicized indicates long time Choice activist

Grey highlights: Carried policy for Planned Parenthood

What does it mean for a candidate to be rated pro-choice?

Planned Parenthood's definition of a pro-choice position must:

- Support legal abortion and the right to privacy as defined by the Roe v. Wade decision. Oppose restrictions aimed at limiting access to safe, legal abortion.
- Support coverage of essential reproductive health services - family planning, prenatal care, abortion and related services - through both publicly funded health programs and private insurance plans.
- Support minors' access to confidential services for health care.
- Support comprehensive sexuality education in public schools.
- Oppose fetal personhood.

Nevada Advocates for Planned Parenthood Affiliates is the independent, non partisan, non profit legislative and political advocacy arm for Planned Parenthoods Mar Monte and Southern Nevada. We protect women's health and privacy by engaging voters and working to elect candidates who support our policies and programs.

* Not all candidates or all races are listed.

Election Date: Tuesday, November 2, 2010



Nevada Advocates for Planned Parenthood Affiliates

NAPPA

The lobbying & political arm of Planned Parenthood in Nevada



Name	Incumbent	Rating	Party
State Senate, Capital District			
● Kevin Ranft		Pro	Dem
Cody Quirk		Anti	IA
James Settelmeyer	I	Known Anti	Rep
State Senate, District 1			
● Sheila Leslie		Pro	Dem
Thomas Cornell		n/r	Lib
Philip Salerno ¹		Known Anti	Rep
State Senate, District 2			
● Allison Edwards		Pro	Dem
Don Gustavson		Known Anti	Rep
State Senate, District 5			
● Joyce Woodhouse	I	Pro	Dem
Michael Roberson		Known Anti	Rep
State Senate, District 7			
● Mark Manendo		Pro	Dem
Anthony Wright		n/r	Rep
State Senate, District 8			
● Tammy Peterson		Pro	Dem
Barbara Cegavske	I	Known Anti	Rep
State Assembly, District 2			
● David Lerner		Pro	Dem
Jon Kamerath		n/r	IA
John Hambrick	I	Known Anti	Rep
State Assembly, District 3			
● Peggy Pierce	I	Pro	Dem
Eric Morelli		n/r	Rep
State Assembly, District 4			
● Gary Fisher		Pro	Dem
Mark Andrews		n/r	IA
Richard McArthur	I	n/r	Rep
State Assembly, District 6			
● Harvey Munford		Pro	Dem
Carole Long		Known Anti	Rep
State Assembly, District 7			
Dina Neal		Leans Pro	Dem
Geraldine Lewis		n/r	Rep
State Assembly, District 8			
● Jason Frierson		Pro	Dem
Stacey Gonzales		n/r	IA
Joe Egan		Known Anti	Rep
State Assembly, District 9			
Tick Segerblom	I	n/r	Dem
Lois Basicis		n/r	Rep

Name	Incumbent	Rating	Party
State Assembly, District 10			
● Joe Hogan	I	Pro	Dem
Steve Lenores		n/r	Lib
Tyler Andrews		n/r	Rep
State Assembly, District 12			
James Ohrenschall	I	n/r	Dem
Tod Oppenborn		n/r	Rep
State Assembly, District 13			
Louis DeSalvio		Leans Pro	Dem
Leonard Foster		n/r	NP
Scott Hammond		n/r	Rep
State Assembly, District 14			
Maggie Carlton		Leans Pro	Dem
Lee Roach		n/r	Rep
State Assembly, District 15			
● Elliott Anderson		Pro	Dem
Stan Vaughan		Anti	IA
Dale Snyder		n/r	Rep
State Assembly, District 16			
● John Ocegvera	I	Pro	Dem
Kristie Turley		n/r	Lib
Bob Irwin		Leans Pro	Rep
State Assembly, District 17			
Kelvin Atkinson	I	Leans Pro	Dem
Kenneth King		n/r	Rep
State Assembly, District 18			
● Richard Carrillo		Pro	Dem
Kenneth Walther		n/r	Rep
State Assembly, District 20			
● Lynn Goya		Pro	Dem
Crescent Hardy		n/r	Rep
State Assembly, District 21			
● Ellen Spiegel	I	Pro	Dem
Mark Sherwood		n/r	Rep
State Assembly, District 24			
● David Bobzien	I	Pro	Dem
Monte Johnson		n/r	Rep
State Assembly, District 25			
● Robert Townsend		Pro	Dem
Pat Hickey		Known Anti	Rep
State Assembly, District 26			
Angie Taylor		Leans Pro	Dem
Gregory Miller		n/r	IA
Randy Kirner		n/r	Rep

¹ Salerno returned 100% NAPPA AND 100% NV Right to Life survey.

Election Date: Tuesday, November 2, 2010



The lobbying & political arm of Planned Parenthood in Nevada

Name	Incumbent	Rating	Party
State Assembly, District 27			
● Teresa Benitez-Thompson		Pro	Dem
● Gabe Jurado		Pro	Rep
State Assembly, District 28			
● Lucy Flores		Pro	Dem
● James Cressman		Pro	Rep
State Assembly, District 29			
April Mastroiucca	I	n/r	Dem
Erin Lale		Leans Pro	Lib
Dan Hill		n/r	Rep
State Assembly, District 30			
Debbie Smith	I	Leans Pro	Dem
Kathy Martin		n/r	Rep
State Assembly, District 31			
Richard Daly		Leans Pro	Dem
Randi Thompson		Leans Pro	Rep
State Assembly, District 32			
Ira Hansen		Known Anti	Rep
Jodi Stephens		Leans Anti	Rep
State Assembly, District 36			
● Ron Hibble		Pro	Dem
David Vanderbeek		Anti	IA
Ed Goedhart	I	n/r	Rep
State Assembly, District 38			
Dennis Gomez		n/r	IA
Tom Grady	I	n/r	Rep
State Assembly, District 39			
Joetta Brown		Leans Pro	Dem
David Schumann		n/r	IA
Kelly Kite		n/r	Rep
State Assembly, District 41			
● Paul Aizley	I	Pro	Dem
Janet Porter		n/r	Rep
Carson City Council School Board, District 1			
Ron Swirczek		n/r	NP
● Julie Bushner		Pro	NP
Clark County Commissioner, Ward E			
● Chris Guinchigliani	I	Pro	Dem
Ben Boarman		n/r	Rep

Name	Incumbent	Rating	Party
Clark County District Attorney			
Don Chairez		Leans Pro	Dem
David Roger	I	n/r	Rep
Clark County Assessor			
Michele Shafe		n/r	Dem
Brent Howard		Pro	IA
Gerrit Hale		Leans Pro	Rep
Clark County Public Administrator			
● John Cahill	I	Pro	Dem
Dana Brown		n/r	IA
Wayne Rudolph		n/r	Lib
Jack Clark		n/r	Rep
Clark County Treasurer			
Laura Fitzpatrick		n/r	Dem
Mike "Doc" Javornicky		Anti	Rep
Clark County School Board D			
● Javier Trujillo		Pro	Dem
Lorraine Alderman		n/r	NP
Clark County School Board G			
Erin Earlene Cranor		n/r	NP
James Brooks		Leans Pro	NP
Clark County Sheriff			
● Laurie Bish		Pro	Dem
Douglas Gillespie		n/r	NP
Las Vegas Constable			
John Benaventura		n/r	Dem
Lee Anderson		n/r	IA
● Peter Gariano		Pro	Rep
North Las Vegas Constable			
● Herbert Brown	I	Pro	Dem
Jeffery Eggerman		n/r	Rep
State Board of Education 2			
● Annie Yvette Wilson		Pro	NP
Jose Solorio		n/r	NP
State Board of Education 6			
● Sandra Metcalf		Pro	NP
State Board Regent 3			
● Ken Lange		Pro	NP
Keven Page		n/r	NP

Election Date: Tuesday, November 2, 2010



NAPPA

Nevada Advocates for Planned Parenthood Affiliates



The lobbying & political arm of Planned Parenthood in Nevada

Name	Incumbent	Rating	Party
Washoe County Clerk			
♦ Margaret Flint		Pro	Dem
Amy Harvey	I	n/r	Rep
Washoe County Commissioner, Ward 2			
♦ Betty Hicks		Pro	Dem
David Humke	I	n/r	Rep
Washoe County Commissioner, Ward 3			
♦ Kitty Jung	I	Pro	Dem
William Anthony		n/r	Rep
Washoe County Commissioner, Ward 5			
Garth Elliott		Leans Anti	Dem
Gary Feero		n/r	IA
Bonnie Weber	I	Known Anti	Rep
Washoe County Recorder			
♦ Paul Cain		Pro	Dem
Ruth Gillings		n/r	IA
Kathryn Burke	I	n/r	Rep
Washoe County Treasurer			
Tammi Davis		n/r	Rep
Ken Santor		Leans Pro	Rep
Washoe County School Board Dist C			
Barbara Clark	I	Leans Pro	NP
Francey Dennis		n/r	NP
Reno Mayor			
♦ Robert Cashell	I	Pro	NP
Chad Dehne		n/r	NP
Reno City Council, Ward 2			
Brandi Anderson		Pro	NP
♦ Sharon Zadra	I	Pro	NP
Reno City Council, Ward 4			
Dwight Dortch	I	n/r	NP
Edward Hawkins		Leans Pro	NP

Name	Incumbent	Rating	Party
Sparks City Council, Ward 2			
Ed Lawson		n/r	NP
♦ Robert Lopes		Pro	NP
Sparks City Council, Ward 4			
Mike Carrigan	I	n/r	NP
♦ Timothy M. Egan		Pro	NP
Sun Valley Water and Sanitation			
Sandra Ainsworth		n/r	NP
♦ Susan Severt		Pro	NP
Verdi TV District			
♦ Dick Bein		Pro	NP
Carol Draper		n/r	NP
Rajan Zed		n/r	NP
♦ Nancy Zunino		Pro	NP

Planned Parenthood updates and distributes questionnaires to all candidates for each election. If there is no information on a race, it means none of the candidates returned the 2010 questionnaire. We encourage supporters to directly contact candidates from these races to determine their stance on pro-choice issues.

Canon 5 of the Nevada Code of Judicial Conduct prohibits judicial candidates from taking public positions on issues that have political overtones or that may become the subject of litigation. Therefore no judicial races are listed.

In some cases in which two candidates are rated pro-choice, endorsement preference may be given to the incumbent who has demonstrated support for Planned Parenthood's issues while in office or to individuals who have demonstrated a history of support for Planned Parenthood. **Since we strive for all candidates to be pro-choice, sometimes when there are two or more in a race, we don't take a position or we endorse both candidates.** Ideally we'd have pro-choice candidates from both parties in a race: a win-win for Planned Parenthood constituents.

Some incumbents are known to be supportive, but did not return this year's 2010 questionnaire. For this reason, some incumbents weren't given a rating, although previously endorsed incumbents are underlined.